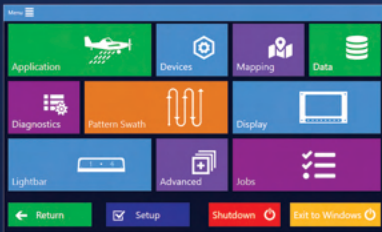


# SATLOC FALCON PRO



# SATLOC FALCON

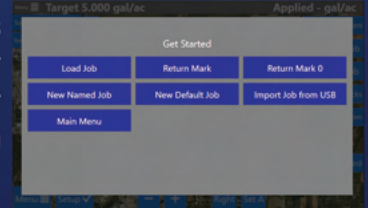


## TOUCHSCREEN DISPLAY WITH MENU NAVIGATION

Easy navigation from one function to the next played a significant role in designing Falcon and Falcon Pro. The buttons on the home screen, and every screen, make navigation simple and intuitive for the pilot, allowing users to access almost every setting with one to three taps. The Falcon and Falcon Pro GPS systems have a 9" or 7" touchscreen display with modern app buttons and dropdown menus.

## JOBS ARE EVERYTHING

In the Falcon/Falcon Pro, Jobs and Logs are connected from the start. At the startup screen, pilots select if they are starting a new job, loading a previous job, importing a new job, returning to a mark, or would like to begin at mark 0 (the last point sprayed). Each job file can then be exported as one file for use in MapStar or other programs. No more needing to match up Jobs with Logs. Jobs can be created in real-time, or polygons and PMAPs loaded into the Falcon/Falcon Pro through the Satloc Cloud or USB.



## BACKGROUND MAPS IN REAL-TIME & OFFLINE

Background maps improve the accuracy and efficiency of dispersal jobs by helping the pilot better understand the terrain. All systems with internet access have access to background maps for free. A distinct capability of the Falcon/ Falcon Pro is the ability to upload offline background maps. Offline background maps are helpful for aircraft with slow or reduced internet capabilities. When there is a poor or limited internet connection, online background maps might not appear. Once loaded into the system offline background maps are easy to use and can provide peace of mind.

## DUAL ENCODER KNOB

The Falcon has a single encoder knob that performs the basic functions of dimming, brightening, and zooming. The Falcon Pro has a dual encoder knob that gives pilots more options to customize and use to their preference. Quick profiles can be created for both encoder knobs to perform a selected function. The dual encoder knob has more options and includes items such as Application Rate · Center Map · Swath Width · Open Menu · Open Setup and More!



## POLY PATTERN FEATURE- VIEW YOUR BEST A|B LINE

Analyze one polygon or multiple at the same time. The system computes the A|B line and required passes for all the polygon lines. Users can then select the most efficient or any other based on their application needs. Sort by Passes (view the most efficient first), Length (view by increasing poly line length), or Heading with Background Maps (rotate around left or right to analyze with external factors, such as wind direction).

## IMU — STANDARD IN THE FALCON PRO

In addition to the improved GPS capabilities, an optional Inertial Measurement Unit has been added to the Falcon Pro. The IMU tracks the plane through periods of GPS signal loss, inherent with extreme turning speeds, to guarantee pass alignment every time.



## INTEGRATED WiFi

WiFi integration in the Falcon/Falcon Pro allows Cloud connectivity and remote tech support. Load and send data faster without the need for additional equipment. The Falcon/Falcon Pro comes ready to connect to the internet and WiFi.





# SATLOC<sup>®</sup>

Make a Choice  
for the  
System that  
Best Fits You



System Features	SATLOC FALCON	SATLOC FALCON PRO
CPU with 2 Mounting Options	✓	✓
Multi-Language (English, Spanish, Portuguese)	✓	✓
7" & 9" Screen Options	✓	✓
ADS-B In	✓	✓
Solid State Hard Drive	256 GB	512 GB
Built In WiFi Connection	✓	✓
Satloc Cloud Connection (With 3rd Party Options)	✓	✓
Real Time Background Maps	✓	✓
Offline Background Maps (Additional Charges Apply)	✓	✓
Shape File Support	✓	✓
Cockpit Encoder Knob (Option to Upgrade)	Single	Dual
Ag Laser Connection (Plug & Fly, No Additional Cabling)	✓	✓
Guidance Modes (Enhanced Features in the Falcon Pro)	✓	✓
PMAP's	Unlock Required -\$	✓
Auto Dispersal (Formerly Spray Off)	Unlock Required -\$	✓
Boom Control Input (With Enhanced Patterns)	Unlock Required -\$	✓
Controls & Monitors 4 Valves		✓
Dry Controller / Variable Rate		✓
Transland Meterate		✓
External CAN		✓
Flow Meter Input		✓
Inertial Measurement Unit (IMU)		✓
Top Hat Control Inputs (Additional Hardware Required)		✓
Integrated AIMMS Capability		Optional Upgrade



## CUSTOMER SERVICE

From the beginning, customer support has been a cornerstone for Satloc. Our dealers are there to assist their customers, and we are training our dealers on the system continually. Many pilots are sharing how they are thrilled with Satloc's customer service. A new customer support feature with the release of Falcon/Falcon Pro is the unique aspect of Satloc tech support's ability to log into a Falcon remotely. With the pilot's permission, our staff can see what is happening on the pilot's Falcon and show him/her different system functions or troubleshoot in real-time.

## FALCON SIMULATOR

One of the many support tools Satloc provides our customers with is the Falcon Simulator. Get to know the Satloc Falcon/Falcon Pro better with the simulator. Free to download from the Satloc website. Experience the ease of the menu functions and learn how to access your favorite settings before your system arrives. Additionally, the simulator can be used as a training tool for new staff and to keep system knowledge up to date for office staff.



## YOUTUBE HOW-TO VIDEOS

Satloc offers How-To videos to help learners know how-to use Falcon and Falcon Pro. Satloc encourages users to subscribe to our YouTube channel to keep informed on all the latest How-To releases on new features or in-depth explanations on functions. This video library is another part of Satloc's commitment to support and service our customers. How -To videos include but are not limited to:

**How-To Setup Hot Keys · How-To Setup the Dry Gate · How-To Setup Booms · How-To Setup Flow Control and Test Flow Control · And Much More!**

## FALCON/FALCON PRO TECHNICAL SPECS

Wireless Data Communications: WiFi, 802.11 AC, 2.4 GHz or 5 GHz	Memory (RAM): 4 GB @ DDR4 SO DIMM	Mount Style: Horizontal or Rack
Main CPU: Intel Core i5-8365UE, 8th generation @ 1.60 GHz with Turbo up to 4.1 GHz	Power Input: 10-30 VDC, reverse input, fault output and surge protection	Footprint: Rack Mount- 6" x 3.9" (23.3 sq in) Horizontal Mount - 6" x 6" (36 sq in)
Solid State Drive: 256 GB Falcon G 512 GB Falcon Pro (Western digital M.2 NVMe PCIe Gen 3)	Screen: 7" or 9" Touchscreen with multi-function display	20Hz SBAS GPS with optional GLONASS enhanced by 100Hz inertial measurement

# THE NEXT GENERATION OF GUIDANCE IS HERE

## SATLOC.COM